

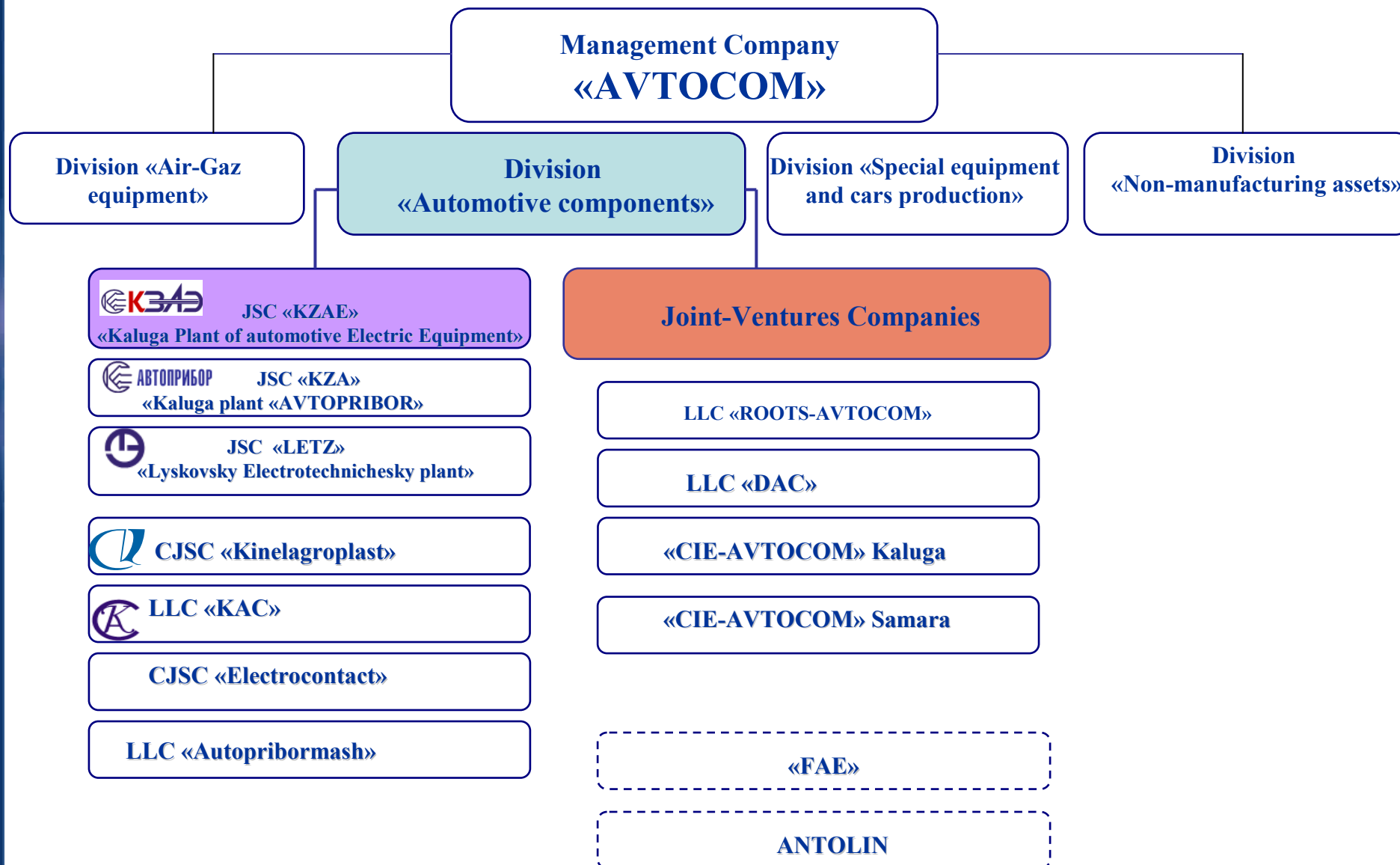
INDUSTRIAL GROUP  
**ABTOKOM**



**JSC «KZAE» «Kaluga Plant of automotive Electric Equipment»**



# 1. Structure of PG «AVTOCOM»



## 2. Geography of IG «AVTOCOM»

**АВТОКОМ**



### 3. Multiplexed information



**JSC «KZAE» «Kaluga Plant of automotive Electric Equipment»**

**Address: 248017, Kaluga, st. Azarovskay, 18**

**Site: www.kzae.ru**

**Tel./fax: (4842) 55-06-79**

**E-mail: market@avtocom-kaluga.ru**

**Chief Executive Officer (CEO) – Vikhorev Vladimir**

## 4. Plant history

04.03.1941	The plant was established by decree № 185 of Council of Peoples Commissars and Communist party of Bolsheviks
October 1941	The plant was carried off on evacuation in Chelyabinsk and Tyumen
1942	Repair auto armoured workshops in the shops of the plant
1945-1947	Reconstruction of the plant
1948	Beginning of the serial production of electric parts
1952	The first plant in the region works in accordance with principals "Collective Stakhanov work"
1957	Move to 7-hours working day (the third plant in the country). Start of construction of workshops in Azarovo
1958	The branch of the Moscow highest technical university was opened by the plants
1960	Start of technical re-equipment to manufacture the parts for AVTOVAZ
1963	The first in the region plants of communist work
1966	Move to the new system of planning and economical stimulation (the first in Kaluga)
1971	The plant was awarded by the order of Labor Red banner
1976	The special design Bureau of electronics was established
1977	The production of the parts for KAMAZ was started
1992	JSC «KZAE» was established as legal successor KZAME
2000	«KZAE» was part in Industrial Group AVTOCOM
2006	Beginning of the most large-scale reconstruction of production during the all plants history
2008	The first Assembly line was arranged as production line of single parts
2009	The Joint-Venture Company «CIE-AVTOCOM» was established together with Spanish company CIE-Automotive



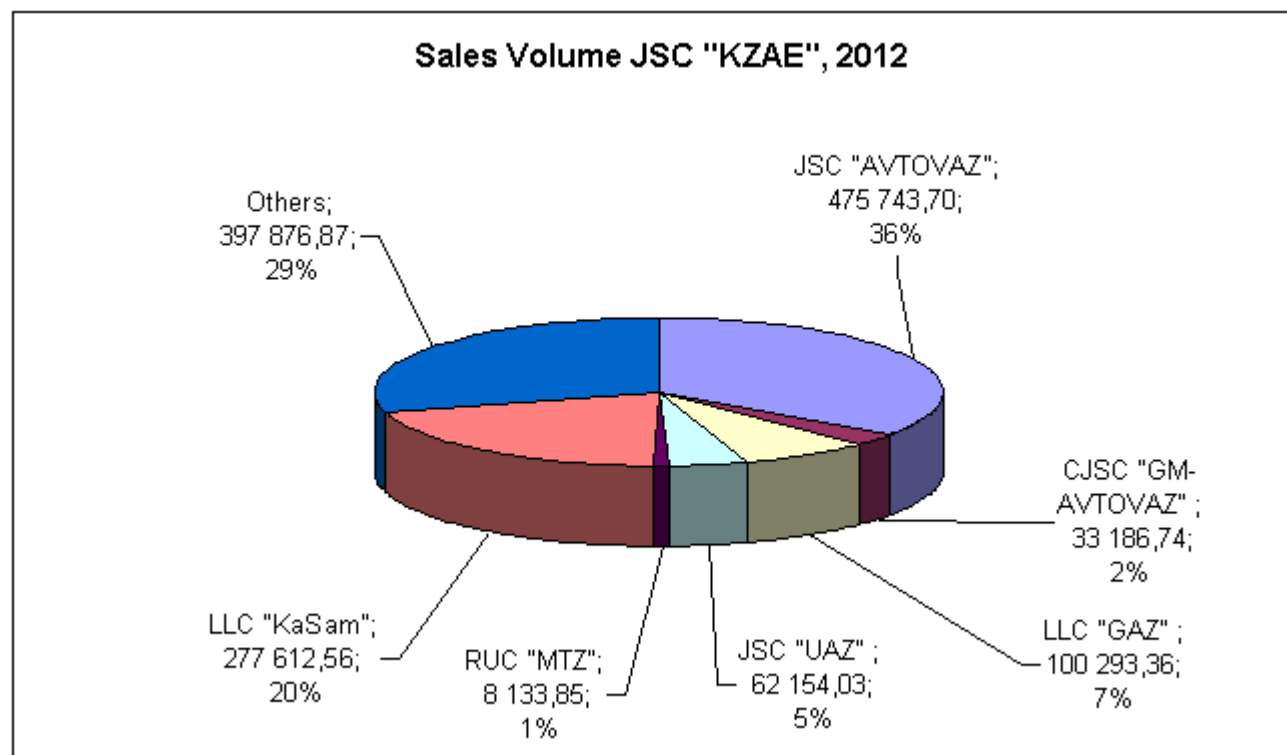
One of the main person in the history of plant was Director Sigov N.D. (60-s years)



During the conclusion of JV agreement between JSC «AVTOCOM» and company «CIE-Automotive».

## 5. Sales volume, JSC «KZAE», 2012

Thousand rubles



## 6. Production technologies

### Procuring manufacture

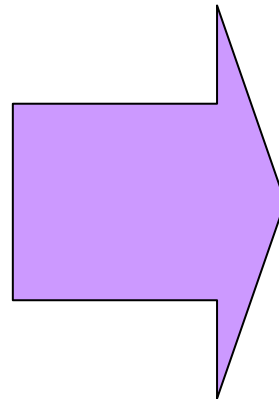
Molding of plastic  
under pressure

Mechanical  
Shop

Castings

STAMPING

Electroplating



ASSEMBLY  
PRODUCTION

## 7. Main products

**ABTOKOM**



- **System for window washing and motopumps**

150 000 m<sup>2</sup>

1 600 people



The factory possesses production capacities for making:



- **Geared Motors**



- **Electric Fans and electric motors**



- **Temperature Sensors**



- **Switching Relays**



- **Blocks of Fuses**



- **Windscreen Wipers**



- **ESUD Sensors**



- **Knock sensor**



**The main line of development of JSC «KZAE» is establishment of Joint-Venture Companies to manufacture the parts correspond to world quality standards**

**2009 – «CIE-AVTOCOM»**

**2011 – «DOGA-CIE-AVTOCOM»**

**2012 – company «FAE» and JSC «AVTOCOM» hold negotiations to establish Joint-Venture Company**

## 8.1. JVC «CIE-AVTOCOM»

**ABTOKOM**



50%



50%



## 8.2. JVC «CIE-AVTOCOM»

**ABTOKOM**



Companies of PG AVTOCOM and CIE AUTOMOTIVE have created in 2009 the joint venture company on manufacture of the automotive components and assembly units with European quality at competitive prices in order to deliver these items to Russian and European car assembly plants.

Production is arranged on the new site completely fitted with advanced machinery.

**STEP I**  
*Mechanical  
processing  
Plastic  
Assembling*

**STEP II**  
*Stamping*

**STEP III**  
*Surface treatment  
Aluminium*

**Step IV**  
*Forging*

**CIE Automotive** is world-wide complex supplier of components and assembly units on automotive market.

Sales turnover 2011: **1.8 Mln. Euro**

Locations over the world:

**Europe:** Spain, France, Portugal, Italy, Lithuania, Rumanie, Czech Republic, **AFRICA:** Morocco, **ASIA:** China  
**AMERICA:** Mexico, Brasil



### 8.3. JVC «CIE-AVTOCOM» - JSC «KZAE» area





## 8.4. JSC «CIE-AVTOCOM» - Equipment

**ABTOKOM**



## 8.5. JVC «DOGA-CIE-AVTOCOM»

**ABTOKOM**

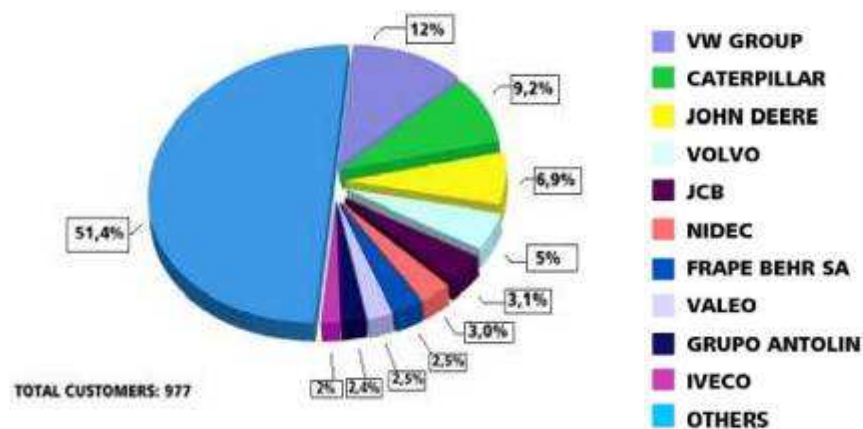


## 8.6. JVC «DOGA-CIE-AVTOCOM»

October 04, 2011 together with **DOGA (Spain)** signed an agreement on the establishment of joint venture to produce automotive components (wipers, instruments, brushes, motor reducers) and scheduled events, which are set out in the document "**Doga-CIE-Avtokom** Protocol" The company will be located on the territory of KZAE squares shop № 1. For production in the joint venture planned to install modern equipment including automatic assembly lines gearmotors, wipers, instruments, brushes.



U: Million Euros



### MAINS PRODUCTS

#### WINDSHIELD WIPER AND WASHER SYSTEMS



#### AIR SYSTEMS



#### WINDOW LIFTERS





## 8.8. Development of IG «AVTOCOM»

**Target: To establish the Joint Venture Company to manufacture the sensors with company «FAE», Spain**

Sales volume



Quality certificate ISO 9001, ISO 14001, ISO TC



**Sensors are produced and controlled with using the modern technologies**



## 8.9. Development of IG «AVTOCOM»



Company «FAE» manufactures a wide range of sensors:



**Fuel sensors**



**Temperature sensors**



**Knock sensors**



**Oxygen sensors**

IG «AVTOKOM» it is interested in cooperation  
with manufacturers of autocomponents of world level.

We are ready to achievement of the joint purposes  
on maintenause with autocomponents  
of leading autoconcerns in territory of Russia.



**AVTOCOM Address:**

**443082, Russia, Samara,**  
Pytigorskaya str., 11  
tel/fax: +7(846)998-63-60  
e-mail: [post@samavtocom.ru](mailto:post@samavtocom.ru)

**248017, Russia, Kaluga,**  
Azarovskaya str., 18  
Direction of Marketing & Sales  
tel.: +7(4842) 79-30-95  
fax: +7(4842) 55-06-79  
e-mail: [ovs@kzae.kaluga.ru](mailto:ovs@kzae.kaluga.ru)